



CINEO  
REFLEX r15

**Introducing Cineo ReFlex R15: a whole new category of hybrid media production lighting.**

Dedication to creating lighting products that fulfill the expectations of motion picture and television professionals has been Cineo's passion since our first high-power LED soft-light studio fixtures. And now with ReFlex we've applied patented, groundbreaking technologies to create a high-output, focusable-beam, fully dimmable hard light which exceeds the capabilities of traditional lighting tools. ReFlex also re-defines versatility by delivering both high-output hard lighting combined soft lighting capabilities.

ReFlex R15 delivers 90,000 lumens of flicker-free and color stable digital lighting with less than a 1,500 watt AC power draw. By providing constantly variable CCT, it can outperform both tungsten and HMI sources, eliminating the deficiencies of traditional sources. Beam angle adjustment from 15 to 75 degrees is accomplished without mechanical movement, making it remotely adjustable; and the Beam Shape and BeamK controls open a whole new realm of possibilities. The reflector can easily be removed and replaced with a variety of soft accessories, including Snapbags®, lanterns and spacelight bags for a structured soft lighting solution.

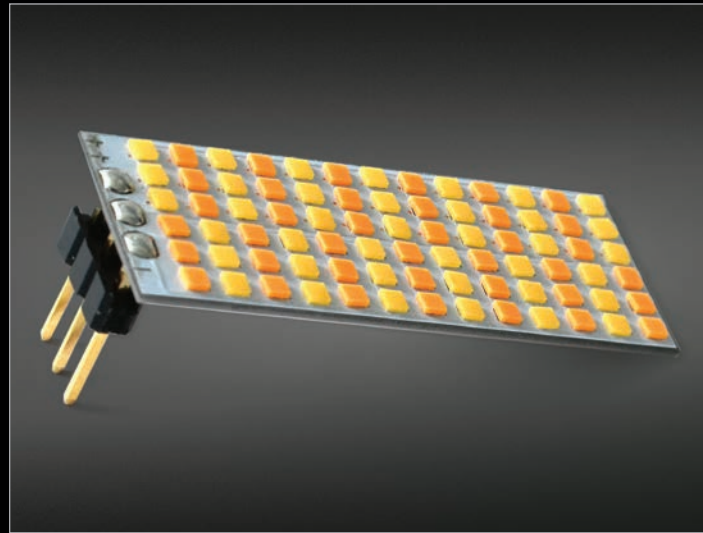
Cineo has completely re-designed its control strategy, making it as easy to use as your smart phone. A full complement of remote control protocols are supported including DMX/RDM and CRMX wireless, with sACN, ArtNet and remote network control soon available. All this in a completely integrated, waterproof package weighing under 75 lbs.

Leveraging our years of experience in solid-state lighting and material sciences, ReFlex uses Cineo-designed, custom-built LEDs and control electronics deliver the same bright, beautiful color rendering and extended deep-red spectrum as our Remote Phosphor fixtures. Unlike other digital sources, Cineo's color spectrum remains consistent throughout the life of the fixture with no color shift or need for calibration.

ReFlex continues our high standard of durability through quality manufacturing, designed for field service and backed by a 2-year warranty.

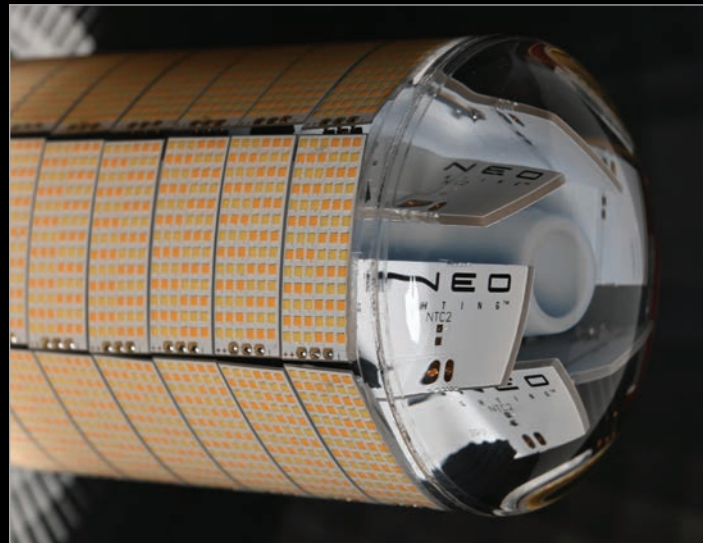


## ReFlex R15: Pure innovation at its core



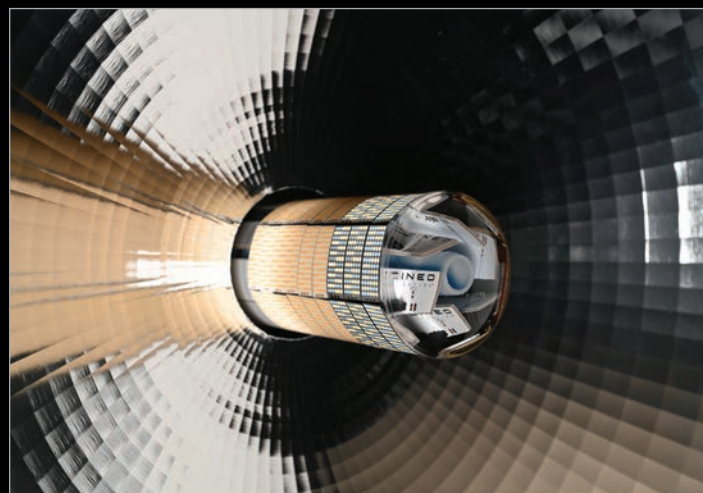
### CSP Arrays

Cineo has partnered with Intematix to create next generation high-output multi-diode light engines using patented Chip Scale Package (CSP) technology. The LED dies are mounted directly to an aluminum nitride substrate, delivering power density of 100 watts per square inch. ReFlex R15 uses 54 of these CSP arrays as its light engine.



### Immersion Cooling

ReFlex uses an optically transparent dielectric fluid to manage the high-density thermal mass generated by the ReFlex light engine. This patented technology opens new opportunities for high intensity digital lighting beyond passive or air-cooled methods employed of the past. The refractive index of the fluid and CSP phosphors have been tuned to deliver Cineo-quality white light at any color temperature from 2700 to 6500K.



### 9-zone Beam Shaping

The ReFlex Radial Light Engine uses nine individually controlled concentric light sources to derive beam angle, shape and CCT. The advantages are many:

- Electronic beam angle control – from Spot to Flood – with no moving parts
- A completely uniform beam shape from 15° to 75°
- Advanced controls to change the beam shape and CCT for specific applications
- All beam functions are digitally adjustable locally and remotely

## Peerless versatility

R15 is the first high-powered hard source that can effectively work in a variety of soft lighting situations. The faceted reflector is easily removable, turning the R15 into a 180° Lambertian light source. An elegant mounting ring transforms the R15 into a perfectly illuminated Snapbag®, Lanterns or Spacelights.



Standard Reflector



Open Face



Snapbag® Lantern – 3', 5' (5' shown)



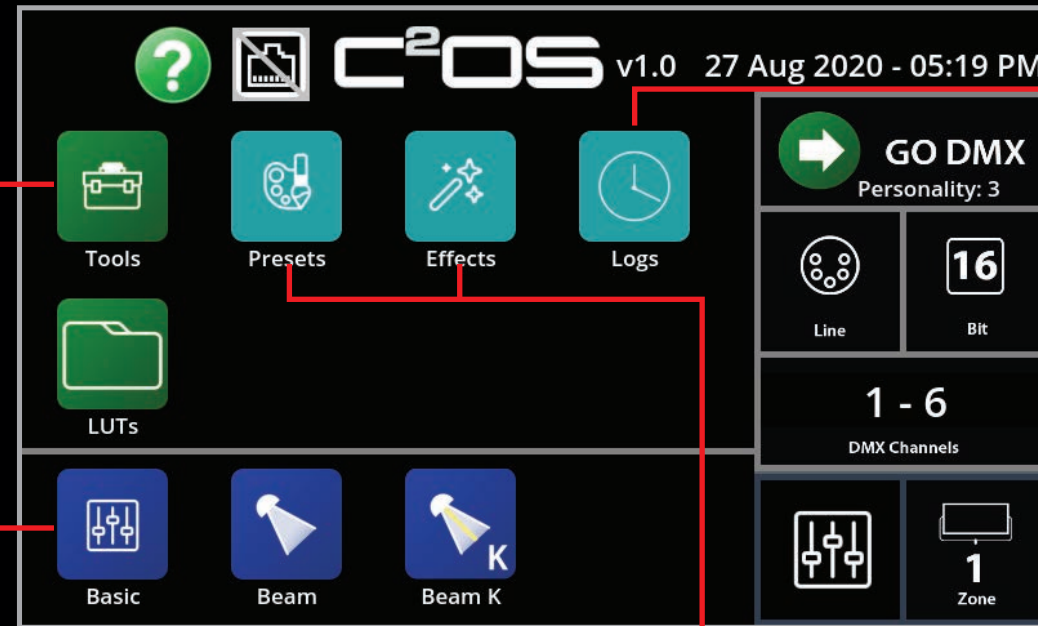
Snapbag® Octa – 3', 5', 7' (7' shown)

## Simple, powerful control

Cineo has completely re-designed its user interface to incorporate a high resolution touchscreen, linux-based 64-bit processor, 32GB memory and a precision real-time clock. This platform is used in all future Cineo fixtures as a familiar, easy-to-use control strategy. Remotely, the R15 offers complete control via DMX/RDM, CRMX, wired and wireless networking.

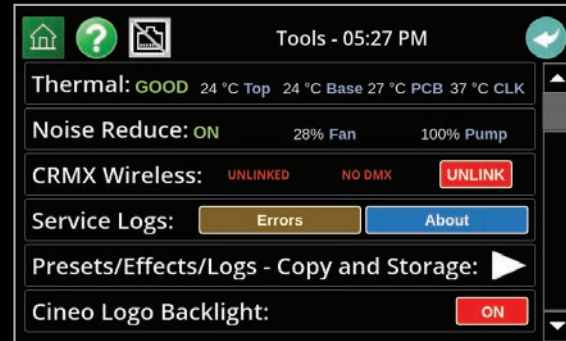
### Home Screen

All functions of the fixture are available locally from the Home Screen, organized in three sections: Functions, Controls and Remote Operations.



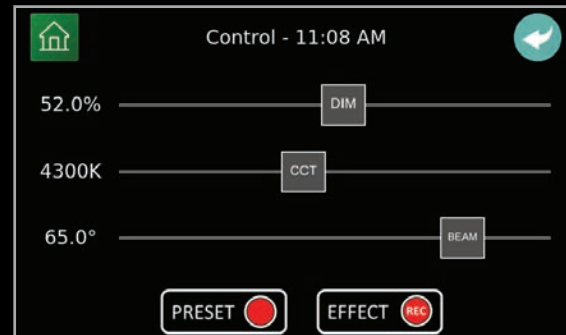
### Logs

ReFlex keeps a time-stamped log of all activities within the fixture at all times when the fixture is on. This provides diagnostic information and allows users to review settings from earlier days, weeks or months of fixture operation.



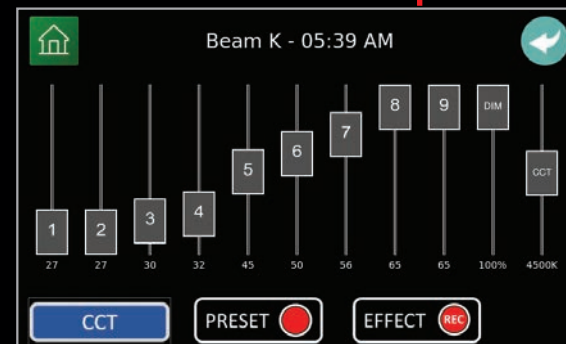
### Tools

System settings, as well as overall health status of the R15 is managed in the Tools window.



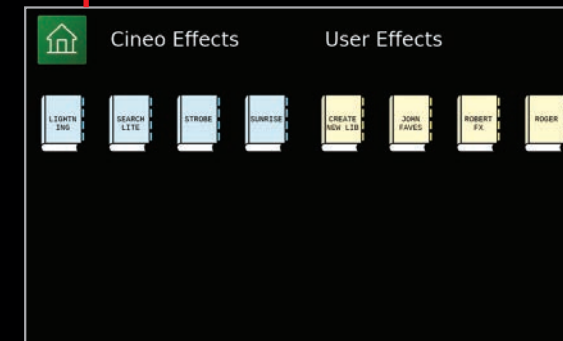
### Local Control

Three familiar controls are provided: Intensity, CCT and Beam Angle (Spot/Flood). Due to the unique tunability of the R15 light engine, a completely uniform beam field is realized between 15° and 75°.



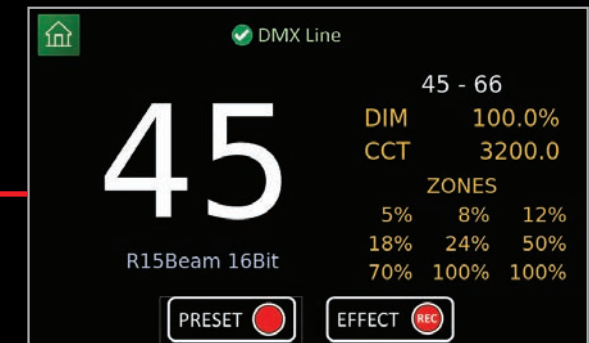
### Advanced Beam Control

When a specialized beam shape is desired, the Beam Shape control allows customizable control of both brightness and CCT in nine areas of the beam. For example, you can make the center of the beam brighter and warmer than the outside edges.



### Presets/Effects Libraries

The state of the fixture can be saved as either a Preset (static) or Effect (time-based). ReFlex ships with a standard set of presets and effects, with the option for User Libraries to be created, managed and transported via USB or network connections.



### Remote Operation

Remote operation variables include communication protocols, operating modes and device addressing. Once remote operations are initiated, the start address for the fixture is displayed, along with all relevant operating data.

### Connections

ReFlex includes (3) DMX ports: DMX In, DMX Out and DMX Bridge. The DMX Bridge output re-generates the DMX input from whatever control input is selected for the fixture. Any ReFlex fixture can be used to bridge and regenerate from the selected input control signal to standard wired DMX out.



## Features at a Glance

### 90,000 Lumen digital hard light

ReFlex's high output relies on the patented design of its light source. Utilizing 54 high-density CSP arrays, the ReFlex Radial Light Engine consists of 9 concentric light sources around its liquid cooled core.

### Comprehensive control options

In addition to its intuitive touchscreen controls, ReFlex has been designed to take advantage of all existing control protocols including DMX/RDM, CRMX, Ethernet and WiFi. Fixture settings, user libraries and software updates utilize the unit's built-in USB port or network support.

### Electronically variable, 15°-75° spot/flood beam control

The ReFlex light engine technology permits the beam angle to be controlled continuously from 15° to 75° electronically, both locally and remotely, with no moving parts.

### Uniform Field Lighting Area

Due to the way the light engine is controlled, the exposure level across the selected beam angle is perfectly uniform: no hot spots or dark areas.

### User-controlled beam shaping

If a more customized beam shape is needed, individual controls of all 9 lighting sources (both intensity and CCT) are available both locally and remotely.

### 2700K to 6500K hybrid output

ReFlex can do the work of both HMI and incandescent hard lights without bulb replacement for the life of the fixture.



**ReFlex R15:**  
Durable, modular  
construction, designed  
for service.

### 100% to 0% dimming – zero flicker, zero color shift

Like all Cineo Lighting fixtures, dimming is controlled over the full range from zero to full output, at all CCTs with no color shift and no flicker at frame rates up to 10,000fps.

### 110/220v household circuit operation

At full power, ReFlex requires less than 1500 watts, making it a simpler solution for remote setups where auxiliary power is impractical.

### Interchangeable reflector and light shaping accessories

The hard reflector is easily removable, creating a 180° Lambertian light source. Soft accessories like Snapbag®, Snapgrids®, lanterns and spacelight bags turn ReFlex into a high-powered soft lighting source with controllable shape.

### Total weight: 75lbs.

ReFlex is completely self-contained: no ballasts or external power supplies. The unique cooling system and compact electronics of ReFlex make for a total weight easily handled by one person.

### Weather Resistant

ReFlex's sealed electronics and cooling systems provide for safe use in wet locations without additional protection.

### 70,000 hour L70 life span

The extremely robust proprietary arrays used in ReFlex deliver uncompromised output for the long life of the fixture.

## Specifications

90,000 lumen maximum output

Variable white light: 2700-6500K

CRi: 90-96

Digitally variable flat field beam angle: 15° to 75°, local or remote control

Flicker-free dimming, 0-100%, up to 10,000fps

Intuitive touchscreen local control

5-pin wired DMX/RDM In, Thru and Re-gen

Integrated Lumen Radio™ CRMX wireless control

sACN, ArtNet, remote operation via Ethernet and Wifi

Presets and dynamic effects can be created, stored and transferred

Software updates via network or USB

Removable reflector with optional soft lighting accessories

Mounting yoke includes removable Junior Pin

Reinforced hang points for top-hanging

Input Power: 110-240VAC 1500 watts max.

Integrated power supply

Fixture Size: 19"l. x 33"w. x 26" dia. (48.3cm l. x 84cm w. x 66cm d.)

Weight: 75 lbs. (34 kg.)

Quiet, active cooling

Suitable for operation in damp locations

Environmental temperature range: -20°C - +40°C Max.  
temperature rise: +40°C

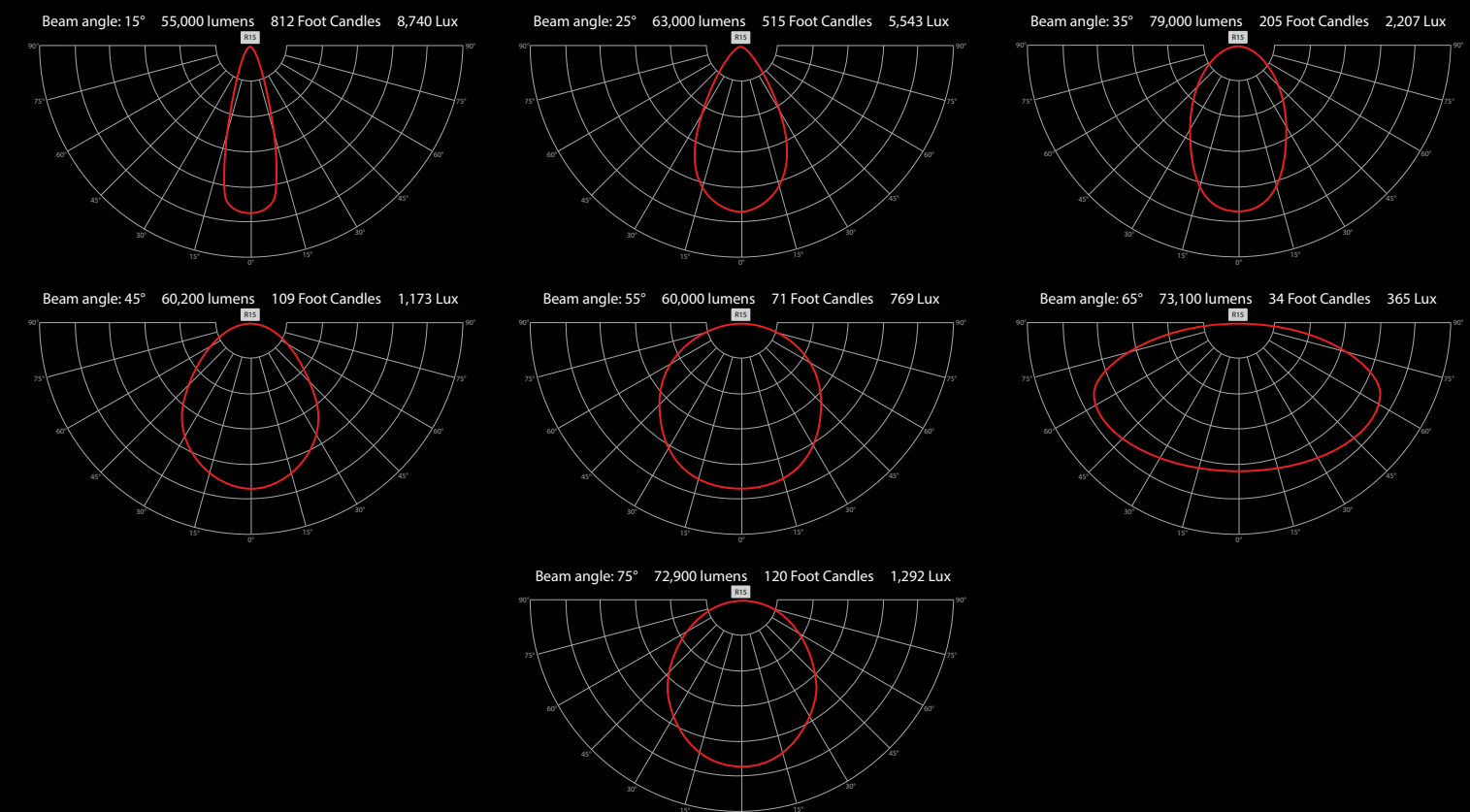
ETL, cETL, CE pending

### ReFlex Beam Control

Unlike conventional hard light fixtures, ReFlex uses nine coaxial lighting zones to create its beam structure. These have been pre-programmed to emulate a basic spot-to-flood control; however more elaborate beam shapes and CCT combinations can be created real-time, stored and recalled using the Beam Shape and BeamK controls.

These charts demonstrate the basic beam control at 20 feet (6m) @5600K. The 15° chart shows characteristics at the "spot" setting, while a standard "flood" setting is shown at 55°. The 65° beam angle projects a very broad, soft spread, whereas the 75° is a wide flood with a hot center.

ReFlex can maintain consistent light output across the entire beam, regardless of the beam width.



## Other Cineo Products



### LB 800 – High-power soft light

Input Power: 110-240VAC, 900 watts max.  
Output: 50,000 lumens  
Fixture Size: 24" x 48" x 5" (610mm x 1220mm x 127mm)  
Weight: 55 lbs. (25 kg.)  
Touchscreen control  
Variable white: 2700K-6500K  
Variable saturated color  
Local and Remote dimming, 0-100%, calibrated in f-stops  
DMX/RDM, CRMX wireless control  
sACN/ArtNet capable; WiFi and bluetooth ready  
8 or 16-bit DMX control  
HSI+CCT or RGB+CCT color control  
Control of up to 10 independent zones  
Record, recall and transfer unlimited Presets and Effects  
Completely flicker-free operation  
Silent, passive cooling



### Standard 480 – Mid-power soft light

Input Power: 110-240VAC, 480 watts max.  
Output: 30,000 lumens  
Fixture Size: 12" x 24" x 4.5" (305mm h x 610 mm w x 115mm d)  
Weight: 28 lbs. (12.7 kg.)  
Touchscreen control  
Variable white: 2700K-6500K  
Variable saturated color  
Local and Remote dimming, 0-100%, calibrated in f-stops  
DMX/RDM, CRMX wireless control.  
sACN/ArtNet capable; WiFi and bluetooth ready  
8 or 16-bit DMX control  
HSI+CCT or RGB+CCT color control  
Record, recall and transfer unlimited Presets and Effects  
Control of up to 6 independent zones  
Flicker-free to 10,000 fps  
Silent, passive cooling



### Lightblade Edge Series – Modular, linear soft lights

Input Power: 110-240VAC  
80W/5,000 lm, 160W/10,000 lm, 320W/20,000 lm.  
Fixture Size: 2' (610mm) and 4' (1220mm) lengths: 1, 2 or 4-bank configurations  
Weight: 1.4lbs - 16lbs.  
Variable CCT: 2700K-6500K  
Local and Remote dimming, 0-100%, calibrated in f-stops  
Selectable 8-bit / 16-bit DMX control  
HSI+CCT or RGB+CCT color control  
Completely flicker-free operation  
Silent, passive cooling



### HS² Wave – Mid-power Remote Phosphor fixture

Input Power: 110-240VAC, 500 watts max.  
Output: 25,000 lumens  
Fixture Size: 12" x 21" x 7.5" (305 mm h x 533 mm w x 191.5 mm d)  
Weight: 33 lbs. (14.8 kg.)  
CCT: 2700K, 3200K, 4300K, 5600K, 6500K, Green, Blue  
Local and Remote dimming, 0-100%, calibrated in f-stops  
Integrated LumenRadio™ wireless DMX  
Flicker-free operation to 25,000 fps  
Silent, passive cooling



### Maverick – Small, portable Remote Phosphor fixture

Input Power: 110/220VAC, 10.5 - 28 VDC, Battery  
150 watts max  
Output: 8,000 lumens  
Fixture Size: 9.4" w x 7.3" h x 3" d (240mm w x 186mm h x 76 mm d)  
Weight: 4.9 lbs. (2.2 kg.)  
CCT: 2700K, 3200K, 4300K, 5600K, 6500K, Green, Blue  
Local and DMX dimming, 0-100%, calibrated in f-stops  
Completely flicker-free operation  
Silent, passive cooling



### MavX – Small, portable hybrid fixture

Input Power: 110/220VAC, 10.5 - 28 VDC, Battery  
150 watts max  
Output: 8,000 lumens  
Fixture Size: 9.5" w x 8.5" h x 3.25" d (241mm w x 216mm h x 83 mm d)  
Weight: 5 lbs. (2.3 kg.)  
Variable CCT: 2700K to 6500K  
Local and DMX dimming, 0-100%  
Integrated LumenRadio™ wireless DMX  
Completely flicker-free operation  
Silent, passive cooling

CINEO  
L I G H T I N G <sup>TM</sup>  
A N B C U N I V E R S A L C O M P A N Y

[cineolighting.com/reflex](http://cineolighting.com/reflex)